

YG-1 TOOLING SYSTEM

ACCESSORY & OTHERS



PULL STUD BOLT
PULL STUD BOLT & SPANNER

TOOL CLAMP

HEIGHT PRESETTER

COOLANT TUBE

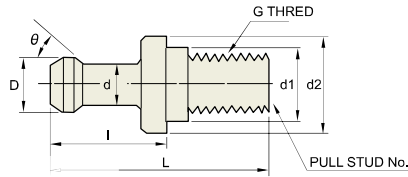
TECHNICAL DATA : SHANK STANDARD
DIN 69871-SK / JIS B6339/MAS 403-BT / DIN 69893/ISO 12164-1-HSK
ANSI/ASME B5.50-CAT
DIN 228 (MORSE TAPER) : TANG / SCREW TYPE



PULL STUD BOLT & SPANNER

PSB

ANZUGBOLZEN
BOULONS DE SERRAGE
TIRANTI PER MANDRINI UNIVERSALI
TIRANTES PARA PORTAHERRAMIENTAS



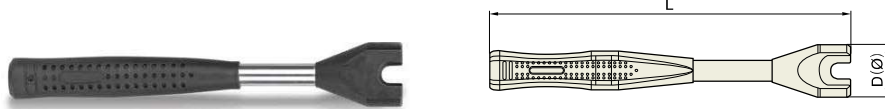
PULL STUD BOLT

Unit : mm

MODEL No.	EDP No.	D	d2	d1	d	L	I	G	O	TYPE
PS-1	P2775051	15	23	17	10	60	35	M16	45°	BT40-I STANDARD TYPE
PS-2	P2775052	15	23	17	10	60	35	M16	60°	BT40-II STANDARD TYPE
PS-5	P2775053	23	38	25	17	85	45	M24	45°	BT50-I STANDARD TYPE
PS-6	P2775054	23	38	25	17	85	45	M24	60°	BT50-II STANDARD TYPE
PS-16	P2775055	11	16.5	12.5	7	43	23	M12	45°	BT30-I STANDARD TYPE
PS-17	P2775056	11	16.5	12.5	7	43	23	M12	60°	BT30-II STANDARD TYPE
PS-0	P2506706	23	38	25	17	85	45	M24	90°	for BT50 OKK
PS-08	P2506703	15	23	17	10	60	35	M16	90°	for BT40 OKK
PS-P	P2775057	24	36	25	18	71	31	M24	90°	for BT50 MITSUBI SEIKI
PS-P5	P2775058	15	23	17	10	50	25	M16	90°	for BT40 MITSUBI SEIKI
PS-G41	P2775059	29	37	25	21	65.2	25.2	M24	45°	for BT50 MAZAK
PS-G51	P2775060	18.8	22	17	12.45	44.1	19.1	M16	45°	for BT40 MAZAK
PS-S2	P2775061	25	39	25	18	95	55	M24	60°	for SHIN NIPPON KOKI
PS-F1	P2775062	23	39	25	18	104	64	M24	45°	for MITSUBISHI
PS-B1	P2775063	22	38	25	16	112	72	M24	60°	for OKUMA
PSS-1	P2506707	19	23	17	14	54	26	M16	75°	for SK40
PSS-5	P2506708	28	36	25	21	74	34	M24	75°	for SK50

► Upon requests, other pull stud bolts with special dimensions could be produced and supplied.

► Through hole type ("H" Type) is available upon request.



PULL STUD BOLT SPANNER

Unit : mm

MODEL No.	EDP No.	D	L	WEIGHT (Kg)	TYPE
PSWB-30	P2775064	27	210	0.30	BT30
PSWB-40	P2775065	37	230	0.40	BT40
PSWB-50	P2775066	49	280	0.78	BT50

PULL STUD BOLT

PSB

ANZUGBOLZEN
BOULONS DE SERRAGE
TIRANTI PER MANDRINI UNIVERSALI
TIRANTES PARA PORTAHERRAMIENTAS

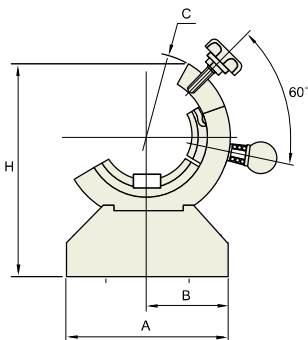
APPLICATION TABLE OF PULL STUD BOLT

MACHINE MANUFACTURER	MACHINE MODEL No.	TAPER No.	PS BOLT	MACHINE MANUFACTURER	MACHINE MODEL No.	TAPER No.	PS BOLT	
DOOSAN	T 4000	BT30	PS-16	SEM C	Any Mill LCV30A/B	BT30	PS-17	
	DT 360D	BT30	PS-16		Any Mill LCV55S	BT50	PS-6	
	DNM 400II/500II/650II	BT40	PSS-1		Any Mill LCV650S	BT50	PS-5	
	DNM 750II/40	BT40	PSS-1		Any Mill ICV66	BT50	PS-5	
	DNM 750II/50	BT50	PS-5		Any Mill ICV80	BT50	PS-5	
	Mynx 6500	BT50	PS-5		DMC-3000	BT50	PS-0	
	Mynx 7500	BT50	PS-5		PCH40	BT40	PS-1	
	VM 5400/6500	BT40	PSS-1		PCH50	BT50	PS-5	
	VM 750	BT50	PS-5		HWACHEON	SIRIUS-1	BT30	PS-16
	VM 960	BT50	PS-5			SIRIUS-550	BT40	PS-1
	VM 1260	BT50	PS-5			SIRIUS-UL/ULG	BT40	PS-1
	VC 430	BT40	PSS-1			SIRIUS-7046	BT50	PS-0
	VC 510	BT40	PSS-1			SIRIUS-650/650N	BT50	PS-0
	DVM 500II	BT40	PSS-1			SIRIUS-850/850N	BT50	PS-0
DVM 5650II	BT40	PSS-1	SIRIUS-700	BT50		PS-0		
NX 4500II	BT40	PSS-1	SIRIUS-12580	BT50		PS-0		
NX 5500II	BT40	PSS-1	S&T	TCH-45		BT40	PS-1	
NX 6500II	BT40	PSS-1		TCH-50		BT50	PS-6	
NHM 5000	BT50	PS-5		TCH-80	BT50	PS-6		
NHM 6300	BT50	PS-5		TCH-80TS	BT50	PS-6		
NHM 8000	BT50	PS-5		FX-500H	BT40	PS-2		
NHM 1000	BT50	PS-5		TNV-40A	BT40	PS-1		
NHM 1250	BT50	PS-5	TNV-80A	BT40	PS-1			
NHP 5000	BT50	PS-5	TNV-650V	BT50	PS-6			
NHP 6300	BT50	PS-5	HASS	TM-1/2	BT40	PS-1		
HC 400II	BT40	PSS-1		VF-45S/35S/25S	BT40	PS-1		
HC 500II	BT40	PSS-1		VF-2TR	BT40	PS-1		
I-CUT 380T/420T	BT30	PS-16		VF-5/50TR	BT50	PS-5		
I-CUT 400T/M	BT30	PS-16	VF-9/50	BT50	PS-5			
F 400/500/650	BT40	PS-1	VF-8/50	BT50	PS-5			
F 500/650	BT50	PS-5	MAZAK		BT40	PS-G51		
F 510M/550M/660M	BT40	PS-1			BT50	PS-G41		
F 510B	BT40	PS-1	MORI SEKI		BT40	PS-08		
F 600B/750B/960B	BT50	PS-5			BT50	PS-51		
KH 50G/63G	BT50	PS-5						
KH 80G/1000	BT40	PS-1						
HS 5000	BT40	PS-1						
HS 5000/6300/8000	BT50	PS-5						

TOOL CLAMP

TC

MONTAGEVORRICHTUNGEN
DISPOSITIF DE MONTAGE
ATTREZZO PER IL MONTAGGIO DI MANDRINI
SOPORTE PARA MONTAJE



• Flange Clamping Design

Unit : mm

TAPER No.	MODEL No.	EDP No.	A	B	C	H	WEIGHT (Kg)
BT30	TCP30	P2775067	125	65	108	135	3.00
BT40	TCP40	P2775068	160	80	138	180	7.60
BT50	TCP50	P2775069	180	90	165	205	8.60
SK30	TSK30	P2775070	125	65	108	135	3.00
SK40	TSK40	P2775071	160	80	138	180	7.60
SK50	TSK50	P2775072	180	90	165	205	8.60
HSK32	THSK32	P2775073	125	65	108	135	
HSK40	THSK40	P2775074					
HSK50	THSK50	P2775075					
HSK63	THSK63	P2775076	160	80	138	180	
HSK100	THSK100	P2775077	180	90	165	205	

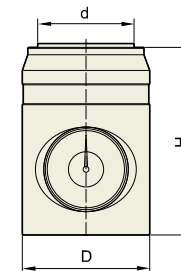
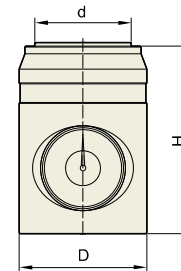
▶ Tool clamp for CAT teapare available.

HEIGHT PRESETTER

HP

• MAGNETIC HEIGHT PRESETTER

• HEIGHT PRESETTER



- Both vertical and horizontal type usable
- Slim design

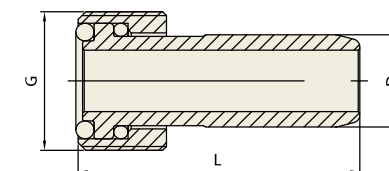
- Exclusively for vertical

Unit : mm

MODEL No.	EDP No.	D	H	d	DIAL
MHP-100 (magnetic)	P2591001	76	100	33	0.01
HP-100	P2775901	68	100 / - 0.01	33	0.01

COOLANT TUBE

CT

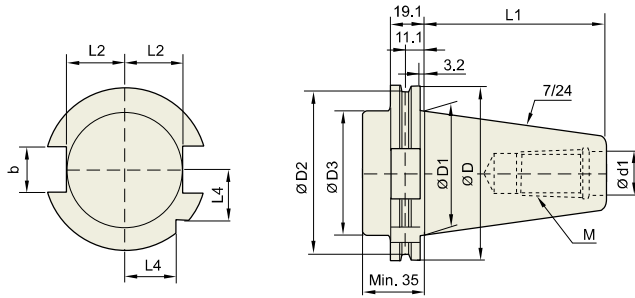


Unit : mm

TAPER No.	EDP No.	G	L	D	WEIGHT (Kg)
32A	P2775078	M10x1.0	26	6	
40A	P2775079	M12x1.0	29.1	8	
50A	P2775080	M16x1.0	32.9	10	
63A	P2775081	M18x1.0	36.6	12	
100A	P2775082	M24x1.5	43.9	16	

TECHNICAL DATA : SHANK STANDARD

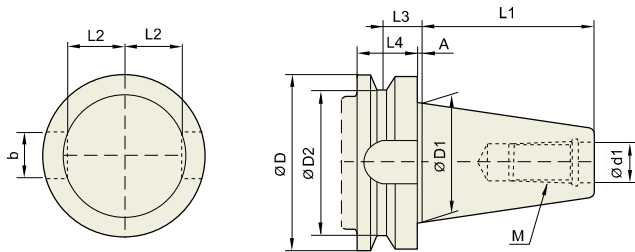
STD



■ DIN 69871-SK

Unit : mm

TAPER No.	$\varnothing D$	$\varnothing D1$	$\varnothing D2$	$\varnothing D3$	$\varnothing d1$	L1	L2	L3	L4	b	M
SK30	50	31.75	44.3	45	13	47.8	16.4	19	15	16.1	M12x1.75
SK40	63.55	44.45	56.25	50	17	68.4	22.8	25	18.5	16.1	M16x2.0
SK50	97.5	69.85	91.25	80	25	101.75	35.5	37.7	30	25.7	M24x3.0



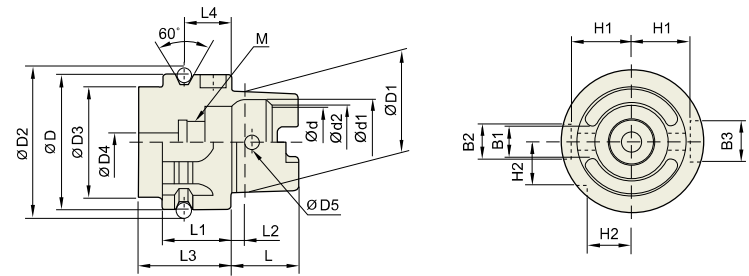
■ JIS B6339/MAS 403-BT

Unit : mm

TAPER No.	$\varnothing D$	$\varnothing D1$	$\varnothing D2$	$\varnothing d1$	L1	L2	L3	L4	A	b	M
BT30	46	31.75	38	12.5	48.4	16.3	13.6	20	2	16.1	M12x1.75
BT40	63	44.45	53	17	65.4	22.6	16.6	25	2	16.1	M16x2
BT50	100	69.85	85	25	101.8	35.4	23.2	35	3	25.7	M24x3
BT60	155	107.95	135	31	161.8	60.1	28.2	45	3	25.7	M30x3.5

TECHNICAL DATA : SHANK STANDARD

STD



■ DIN 69893/ISO12164-1-HSK

Unit : mm

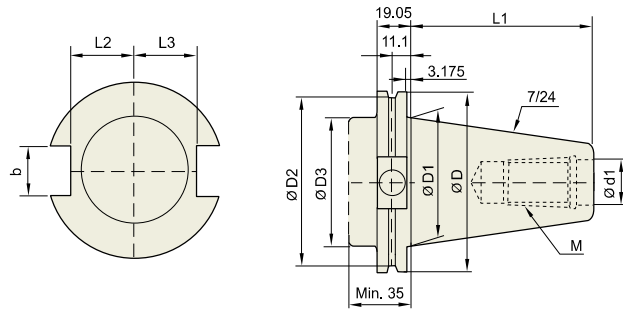
TAPER No.	$\varnothing D$	$\varnothing D1$	$\varnothing D2$	$\varnothing D3$	$\varnothing D4$	$\varnothing D5$	L	L1	L2	L3	L4
HSK32A	32	24	37.00	26	4.2	4.0	16	20	3.2	35	16
HSK40A	40	30	45.00	34	5.0	4.6	20	20	4.0	35	16
HSK50A	50	38	59.30	42	6.8	6.0	25	26	5.0	42	18
HSK63A	63	48	72.30	53	8.4	7.5	32	26	6.3	42	18
HSK80A	80	60	88.8	68	10.2	8.5	40	26	8	42	18
HSK100A	100	75	109.75	85	12.0	12.0	50	29	10.0	45	20

Unit : mm

TAPER No.	$\varnothing d$	$\varnothing d1$	$\varnothing d2$	B1	B2	B3	H1	H2	L4
HSK32A	17	20.5	19	7.05	7	9	13.0	9.5	M10x1.0
HSK40A	21	25.5	23	8.05	9	11	17.0	12.0	M12x1.0
HSK50A	26	32.0	29	10.54	12	14	21.0	15.5	M16x1.0
HSK63A	34	40.0	37	12.54	16	18	26.5	20.0	M18x1.0
HSK80A	42	50	46	16.04	18	20	34	25	M20x1.5
HSK100A	53	63.0	58	20.02	20	22	44.0	31.5	M24x1.5

TECHNICAL DATA : SHANK STANDARD

STD



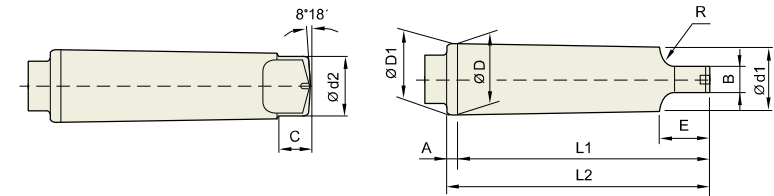
ANSI/ASME B5.50-CAT

Unit : mm

TAPER No.	ØD	ØD1	ØD2	ØD3	Ød1	L1	L2	L3	b	M
CAT30	50	31.75	44.3	31.75	13	47.625	16.25	18.67	16.1	UNC1/2-13
CAT40	63.55	44.45	56.25	44.45	17	68.25	22.60	25	16.1	UNC5/8-11
CAT50	97.5	69.85	91.25	70.1	25	101.6	35.3	37.7	25.7	UNC1-18
CAT60	155	107.95	132.56	108	32	161.93	54	59.3	25.7	UNC1,1/4-7

TECHNICAL DATA : SHANK STANDARD

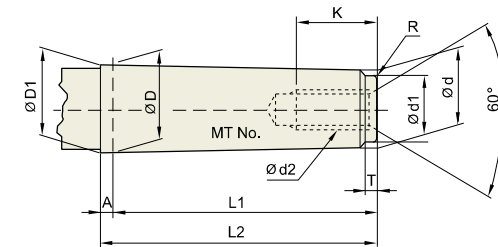
STD



DIN 228 (MORSE TAPER) TANG TYPE (MTA)

Unit : mm

TAPER No.	TAPER RATIO (Rad)	TAPER ANGLE (α)	ØD	A	ØD1	Ød1	L1	L2	Ød2	B	C	E	R
MT0	1/19.212	1°29'27"	9.045	3	9.045	6.104	56.5	59.5	6.0	3.9	6.5	10.5	4
MT1	1/20.047	1°25'43"	12.065	3.5	12.065	8.972	62.0	65.5	8.7	5.2	8.5	13.5	5
MT2	1/20.020	1°25'50"	17.780	5	17.780	14.034	75.0	80.0	13.5	6.3	10	16	6
MT3	1/19.922	1°26'16"	23.825	5	23.825	19.107	94.0	99.0	18.5	7.9	13	20	7
MT4	1/19.254	1°29'15"	31.267	6.5	31.267	25.164	117.5	124.0	24.5	11.9	16	24	8
MT5	1/19.002	1°30'26"	44.399	6.5	44.399	36.531	149.5	156.0	35.7	15.9	19	29	10
MT6	1/19.180	1°29'36"	63.348	8	63.348	52.399	210.0	218.0	51.0	19.0	27	40	13
MT7	1/19.231	1°29'22"	83.058	10	83.058	68.186	286.0	296.0	66.8	28.6	35	54	19



DIN 228 (MORSE TAPER) SCREW TYPE (MTB)

Unit : mm

TAPER No.	TAPER RATIO (Rad)	TAPER ANGLE (α)	ØD	A	ØD1	d	L1	L2	Ød1	d2	K	T	R
MT0	1/19.212	1°29'27"	9.045	3	9.201	6.442	50	53	6.4	-	-	4	0.2
MT1	1/20.047	1°25'43"	12.065	3.5	12.230	9.396	53.5	57	9.4	M6	16	5	0.2
MT2	1/20.020	1°25'50"	17.780	5	18.030	14.583	64	69	14.6	M10	24	5	0.2
MT3	1/19.922	1°26'16"	23.825	5	24.076	19.759	81	86	19.8	M12	28	7	0.6
MT4	1/19.254	1°29'15"	31.267	6.5	31.605	25.943	102.5	109	25.9	M16	32	9	1
MT5	1/19.002	1°30'26"	44.399	6.5	44.741	37.584	129.5	136	37.6	M20	40	9	2.5
MT6	1/19.180	1°29'36"	63.348	8	63.765	53.859	182	190	53.9	M24	50	12	4
MT7	1/19.231	1°29'22"	83.058	10	83.578	70.058	250	260	70.0	M33	80	18.5	5