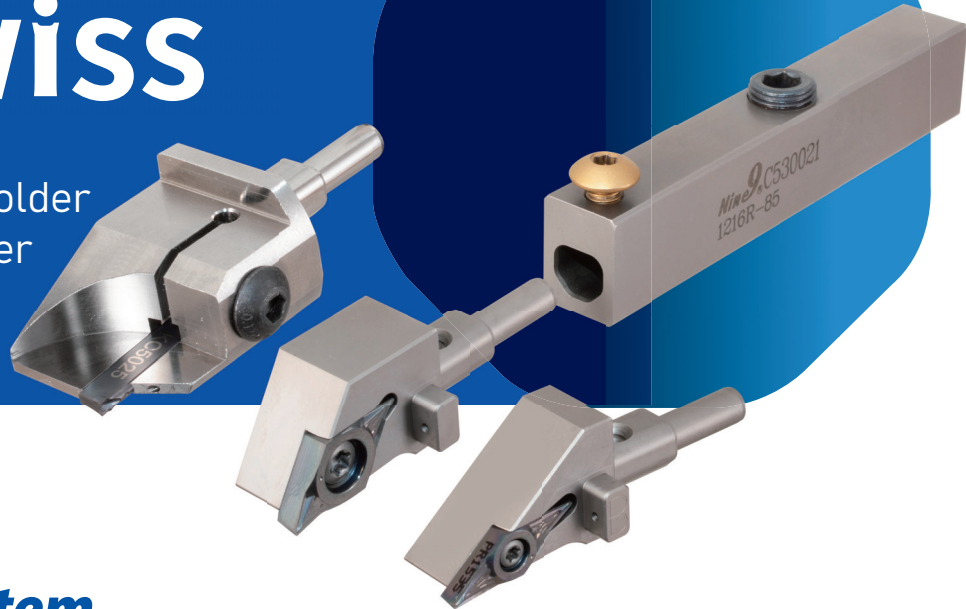




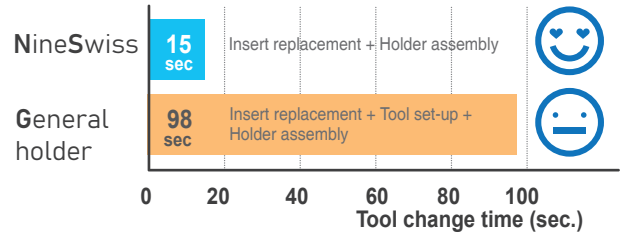
NineSwiss

Modular Head and Tool Holder
Boring Bar and Tool Holder
for Swiss Type Machine



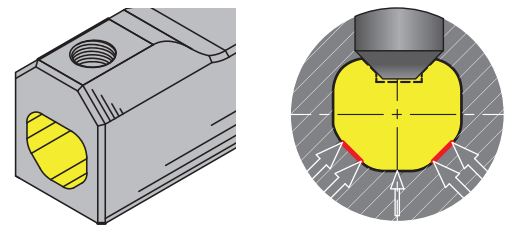
Quick Change System

- High repeatability of modular design, and the head can be exchanged in just 15 seconds.
- No more exchange insert in the machine, minimizing the machine's idle time.



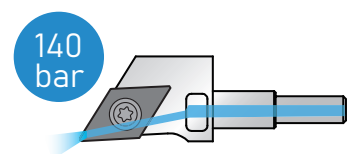
High Rigidity and Excellent Repeatability

- Cutting performance is comparable to that of solid-type indexable turning tools.
- Tool length and insert center height are maintained while changing modular heads.
- High position repeatability of $\pm 0.02\text{mm}$ for every head replacement
- No more tool length offset adjustments are required after changing modular heads.



High coolant pressure

- The entire system is well sealed by the metal-to-metal contact between the head and holder, combined with the extended location shaft, which withstands the high coolant pressure up to 140 bar.



NineSwiss

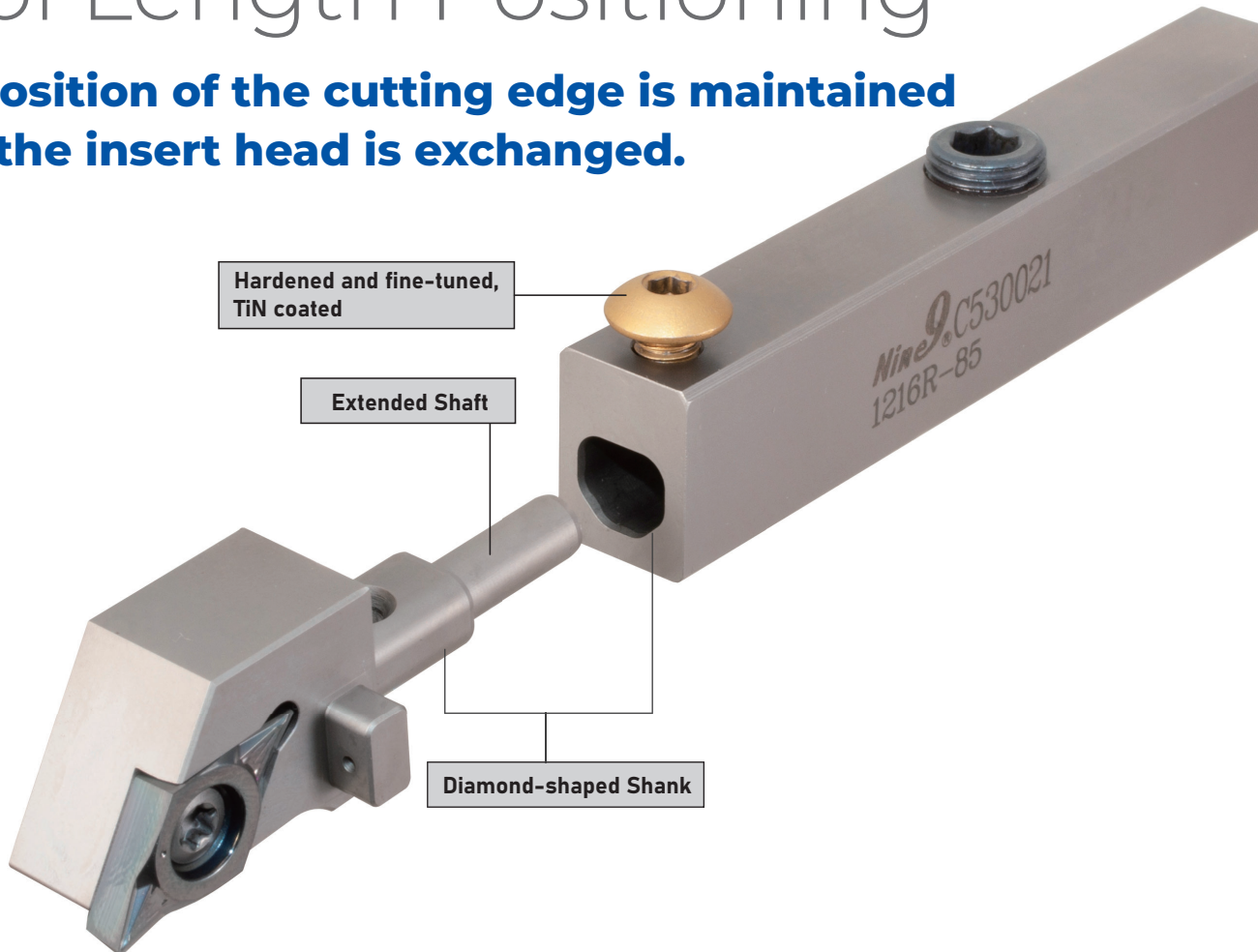
Modular Head and Tool Holder - DM Series

Patent Pending

Special locking mechanisms

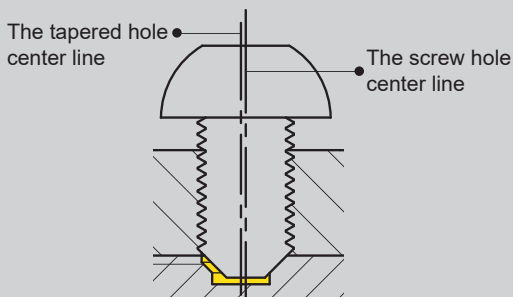
Quick and Precise Tool Length Positioning

The position of the cutting edge is maintained after the insert head is exchanged.



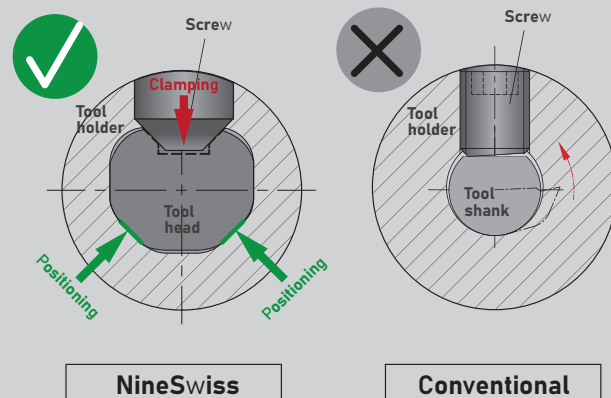
Eccentric Clamping Mechanism

The clamping edge of the screw is hardened and fine-tuned, and TiN coated for identification of the screw for the Nine Swiss system.



The diamond-shaped

The diamond-shaped positioning mechanism and extended shaft enable the system to achieve high precision positioning of the head on the holder in three directions.



Customized on request

The following information should be checked while discussing with customer.

▶ Insert Type >>

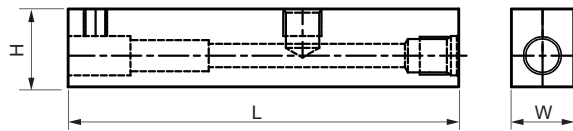
- | | | | |
|---|---|---|--|
| <input type="checkbox"/> 35° Diamond Type
V | <input type="checkbox"/> 55° Diamond Type
D | <input type="checkbox"/> 80° Diamond Type
C | <input type="checkbox"/> Triangular Type
T |
| <input type="checkbox"/> Cut-Off
ECH | <input type="checkbox"/> Grooving
EC | <input type="checkbox"/> Threading
ER / IR | <input type="checkbox"/> Other |

▶ Tool Holder Dimension >>

• Square Shank

H: _____ L: _____ W: _____

• Square Shank

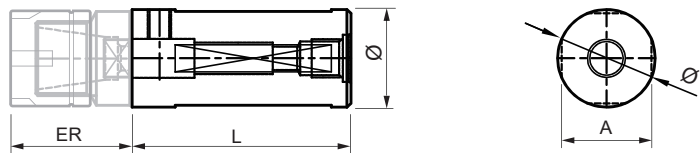


• Cylindrical Shank

ER11 (20mm) ER16 (30mm)

L: _____ Ø: _____ A: _____

• Cylindrical Shank

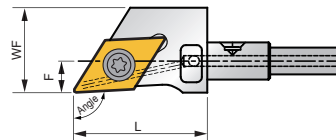


▶ Modular Head >>

Insert Brand _____

SDJC

Right hand Left hand



WF _____

F _____

L _____

Approach angle

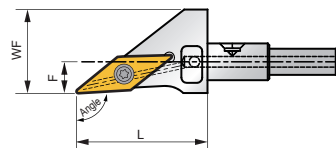
93° 90° 55°

Other _____

Insert Brand _____

SVJB SVJC

Right hand Left hand



WF _____

F _____

L _____

Approach angle

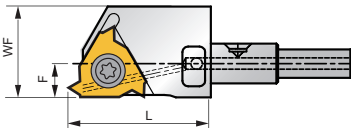
93° 90° 55°

Other _____

Insert Brand _____

Threading

External Inaternal



WF _____

F _____

L _____

Insert Brand _____

Cut-Off

Right hand Left hand

WF _____

F _____

L _____

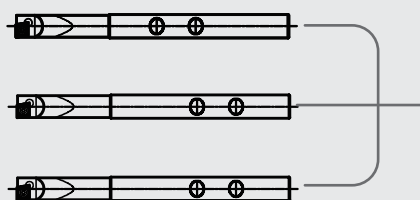
Insert Brand _____

Other

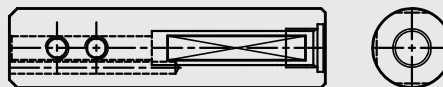
Right hand Left hand

Boring Bar and Tool Holder - DL Series

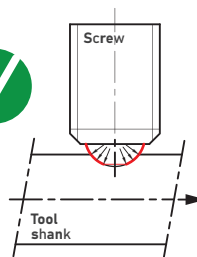
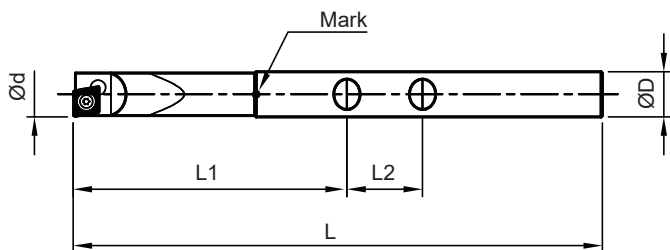
Boring Bar



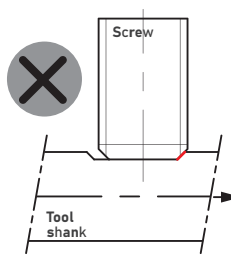
Tool Holder



Internal Boring Bar



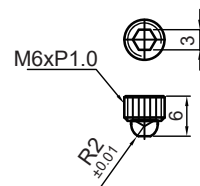
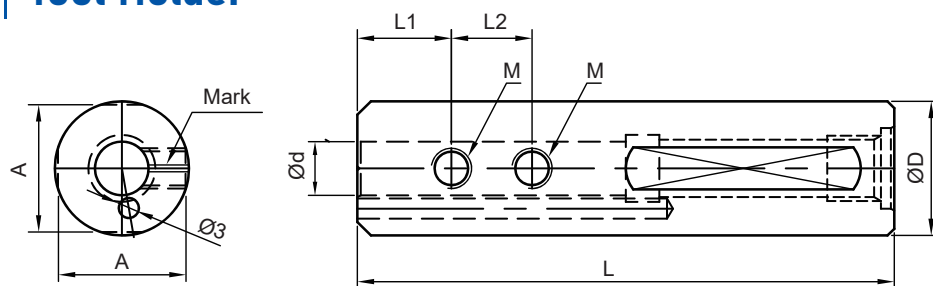
A ball-ended screw locks into a spherical dimple on the tool shank.



A set screw locks with laterally on the tool shank.

Part No.	ØD	Ød	L1 ±0.05	L2	L ±0.05	Insert Type
DL06-0500W-070L-CC03	6 ^{-0.001} _{-0.006}	5.0	22.7			
DL06-0550W-070L-CC03	6 ^{-0.001} _{-0.006}	5.5	34.5	10	70	CC03
DL06-0600W-070L-CC03	6 ^{-0.001} _{-0.006}	6.0	36.2			
DL06-0650W-070L-CC03	6 ^{-0.001} _{-0.006}	6.5	38.0			
DL08-0700W-085L-CC04	8 ^{-0.001} _{-0.006}	7.0	42.8			
DL08-0750W-085L-CC04	8 ^{-0.001} _{-0.006}	7.5	44.6	12	85	CC04
DL08-0800W-085L-CC04	8 ^{-0.001} _{-0.006}	8.0	46.0			
DL10-0900W-085L-CC06	10 ^{-0.003} _{-0.008}	9.0	52.0	14	85	CC06
DL10-1000W-088L-CC06	10 ^{-0.003} _{-0.008}	10.0	55.0	14	88	CC06

Tool Holder



Screw: NS-60060

Part No.	ØD ^{-0.003} _{-0.008}	Ød	L1 ±0.05	L2	L ±0.05	A	M	Screw
SL20-DL06-80L	20	6 ^{+0.006} _{+0.001}	12	10				
SL20-DL08-80L	20	8 ^{+0.006} _{+0.001}	14	12	80	19		
SL20-DL10-80L	20	10 ^{+0.008} _{+0.003}	15	14				
SL22-DL06-80L	22	6 ^{+0.006} _{+0.001}	12	10			M6	NS-60060
SL22-DL08-80L	22	8 ^{+0.006} _{+0.001}	14	12	80	21		
SL22-DL10-80L	22	10 ^{+0.008} _{+0.003}	15	14				